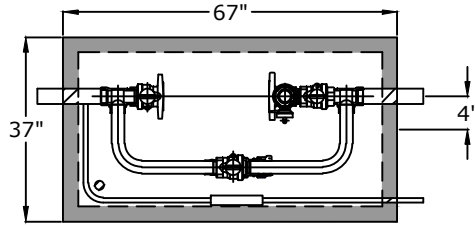


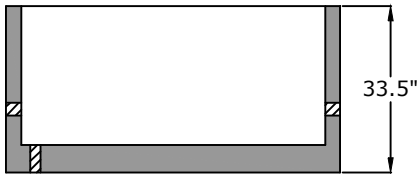
## Top View



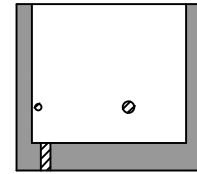
## Notes

1. (2) 2" x 24" Brass Nipple
2. (1) 2" x 1" A.Y. McDonald No-Rise No Lead Setter  
720R700KWFF 777X451
3. (2) 2" Oval Meter Gasket 2-bolt
4. (4)  $\frac{5}{8}$ " Hex Bolts and Nuts
5. (1) AYM 1" MIPxPJC Adapter 74753-22 No Lead
6. (1) AYM 1" Copper Tube L 12"x16"
7. (1) AYM 1" Ball Valve PJCxFIPT 76102W-22 No Lead
8. (1) 1" AYM Line Setter  
770-4--JMMD 44X484X990 No Lead
9. 1" x 24" Brass Nipple
10. (1) 29" x 59" Opening Single Leaf Aluminum Hatch Pedestrian Rated (300lb/ft<sup>2</sup>) S1R029059C-D-D---- W/SS Slam Lock W/Key, Spring Assist, EPDM Gasket Cushion, Embed Flange Removed
10. 2" Drain Hole
11. City of Lebanon to Provide 2" Disc Meter 17" Length and 1" meter
12. (5) 2" Stainless Steel Pipe Stands

## Side View



## End View



## Approved for Production

Project: \_\_\_\_\_ Date: \_\_\_\_\_

Quantity: \_\_\_\_\_ By: \_\_\_\_\_

# BARGER PRECAST

**FORTILINE**  
WATERWORKS 

C.R. Barger & Sons, Inc.  
P.O. Box 370 - Kingston TN 37763  
Phone 865.270.8080 - BargerAndSons.com

### Specifications

**Concrete:** 5,000 psi minimum strength (28 day)  
**Pipe Penetrations:** All pipe penetrations are placed according to job requirements.

**2" Meter with Bypass - 1" Irrigation**  
**City of Lebanon, TN**

Date: 5.062021

Drawn By: Eric Barger

Approx. Vault Weight: 3,050 lbs.