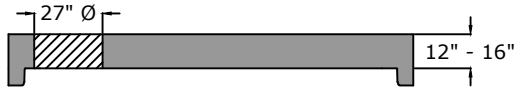


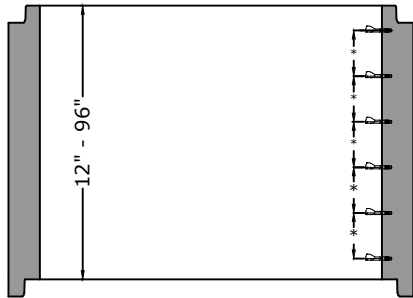
Side View

Flat Top



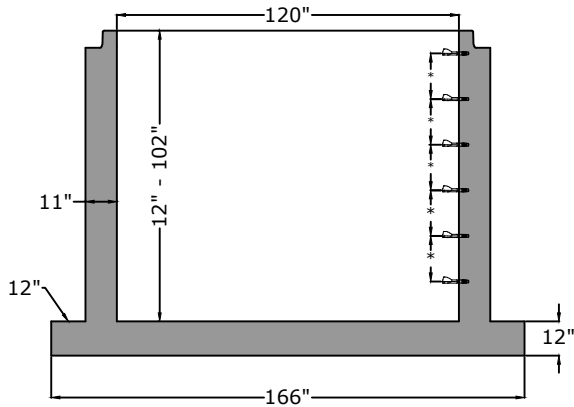
Flat Top	
12"	- 17,700 lb
14"	- 20,500 lb
16"	- 23,250 lb

Riser

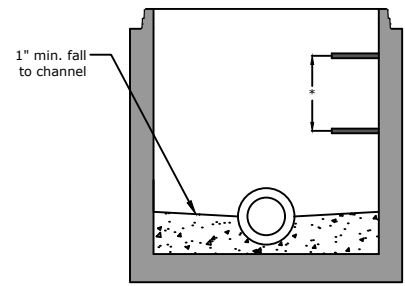


Riser Weights	
12"	- 4,750 lb
16"	- 6,300 lb
24"	- 9,450 lb
32"	- 12,600 lb
36"	- 14,200 lb
48"	- 18,900 lb
60"	- 23,600 lb
64"	- 25,150 lb
72"	- 27,000 lb
84"	- 33,000 lb
96"	- 37,750 lb

Monolithic Base

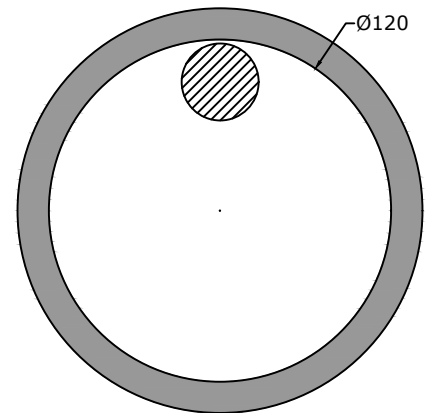


Base Weights	
12"	- 27,300 lb
24"	- 32,000 lb
36"	- 36,700 lb
48"	- 41,500 lb
60"	- 46,200 lb
72"	- 50,900 lb
84"	- 55,600 lb
96"	- 60,500 lb



Manhole Base Preformed Invert Detail

Top View



Approved for Production

Project: _____

Date: _____

Quantity: _____

By: _____

Drawn by: Eric Barger

Date: 08.062024

BARGER
PRECAST

Concrete: 5,000 psi minimum 28 day compressive strength
Reinforcing: Per ASTM C478 with design calculations performed by a Licensed P.E. Minimum 2" cover of all reinforcing steel.
Pipe Penetrations: All pipe penetrations are placed according to job requirements.
Pipe Seals: All pipe boots will meet ASTM C 923.
Sealant: Sealant used will meet ASTM C 990.
Steps: On 16" centers unless otherwise specified.
Preformed Invert: As required by plans or governing specifications.

P.O. Box 370 - Kingston TN 37763
 Phone 888.882.5860 - BargerPrecast.com

120" I.D. Manhole - Extend Base Slab
ASTM C-478 Compliant