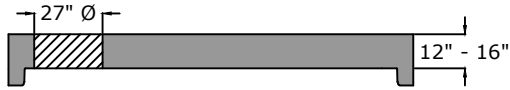


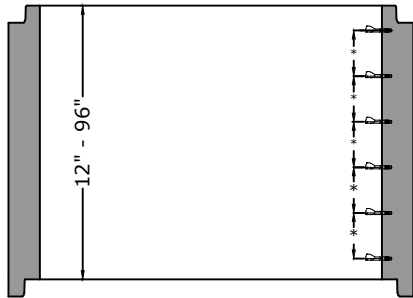
Side View

Flat Top



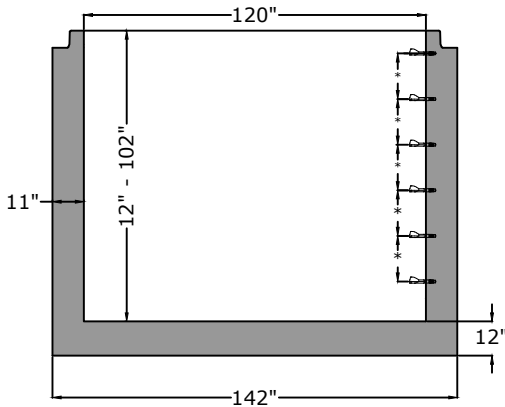
Flat Top	
12"	- 16,000 lb
14"	- 18,750 lb
16"	- 21,500 lb

Riser

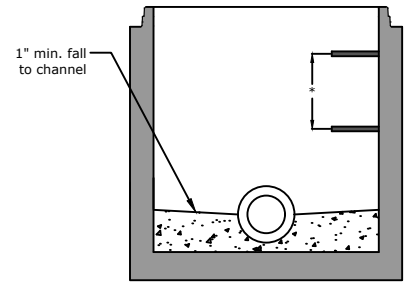


Riser Weights	
12"	- 4,750 lb
16"	- 6,300 lb
24"	- 9,450 lb
32"	- 12,600 lb
36"	- 14,200 lb
48"	- 18,900 lb
60"	- 23,600 lb
64"	- 25,150 lb
72"	- 27,000 lb
84"	- 33,000 lb
96"	- 37,750 lb

Monolithic Base

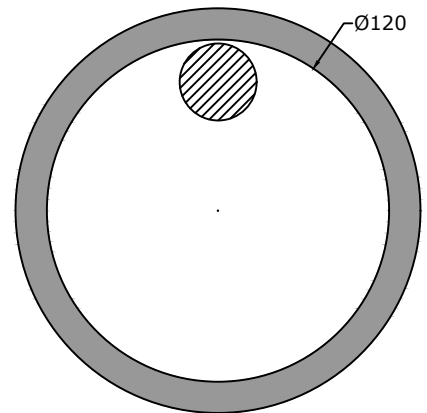


Base Weights	
12"	- 20,500 lb
24"	- 25,000 lb
36"	- 29,500 lb
48"	- 34,000 lb
60"	- 38,500 lb
72"	- 43,000 lb
84"	- 47,500 lb
96"	- 52,000 lb



Manhole Base Preformed Invert Detail

Top View



Approved for Production

Project: \_\_\_\_\_

Date: \_\_\_\_\_

Quantity: \_\_\_\_\_

By: \_\_\_\_\_

Drawn by: Eric Barger

Date: 08.062024

**BARGER**  
**PRECAST**

**Concrete:** 5,000 psi minimum 28 day compressive strength  
**Reinforcing:** Per ASTM C478 with design calculations performed by a Licensed P.E. Minimum 2" cover of all reinforcing steel.  
**Pipe Penetrations:** All pipe penetrations are placed according to job requirements.  
**Pipe Seals:** All pipe boots will meet ASTM C 923.  
**Sealant:** Sealant used will meet ASTM C 990.  
**Steps:** On 16" centers unless otherwise specified.  
**Preformed Invert:** As required by plans or governing specifications.

P.O. Box 370 - Kingston TN 37763  
 Phone 888.882.5860 - BargerPrecast.com

**120" I.D. Manhole**  
**ASTM C-478 Compliant**