

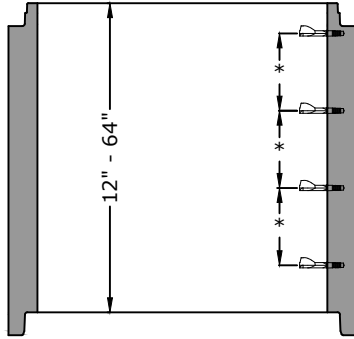
Flat Top



Flat Top

- 8" - 3,000 lb
- 10" - 3,700 lb
- 12" - 4,400 lb
- 16" - 5,900 lb

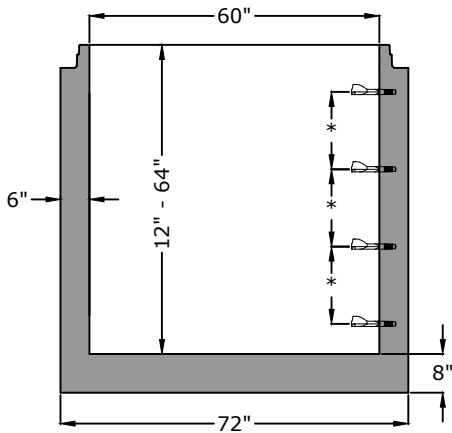
Riser



Riser Weights

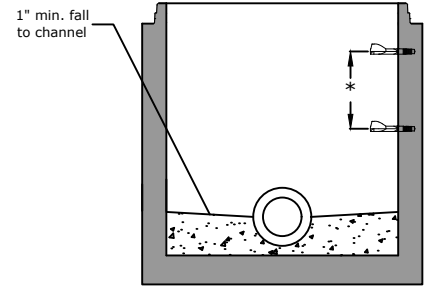
- 12" - 1,300 lb
- 16" - 1,750 lb
- 24" - 2,600 lb
- 32" - 3,450 lb
- 36" - 3,900 lb
- 48" - 5,200 lb
- 60" - 6,500 lb
- 64" - 6,900 lb

Monolithic base

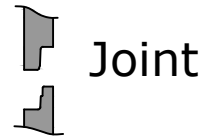


Base Weights

- 12" - 4,150 lb
- 16" - 4,500 lb
- 24" - 5,450 lb
- 32" - 6,300 lb
- 48" - 8,000 lb
- 60" - 9,300 lb
- 64" - 9,750 lb
- 71" - 10,500 lb



**Manhole Base Preformed Invert Detail**



**Approved for Production**

**Project:** \_\_\_\_\_

**Date:** \_\_\_\_\_

**Quantity:** \_\_\_\_\_

**By:** \_\_\_\_\_

**Drawn by:** Eric Barger

**Date:** 08.222024

**BARGER  
PRECAST**

**Concrete:** 5,000 psi minimum 28 day compressive strength  
**Reinforcing:** Per ASTM C478 with design calculations performed by a Licensed P.E. Minimum 2" cover of all reinforcing steel.  
**Pipe Penetrations:** All pipe penetrations are placed according to job requirements.  
**Pipe Seals:** All pipe boots will meet ASTM C 923.  
**Sealant:** Sealant used will meet ASTM C 990.  
**Steps:** On 16" centers unless otherwise specified.  
**Preformed Invert:** As required by plans or governing specifications.

P.O. Box 370 - Kingston TN 37763  
 Phone 888.882.5860 - BargerPrecast.com

**60" I.D. Manhole  
 ASTM C-478 Compliant**