

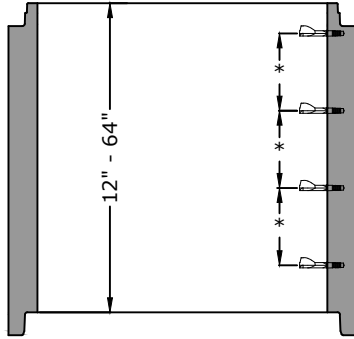
Flat Top



Flat Top

- 8" - 3,000 lb
- 10" - 3,700 lb
- 12" - 4,400 lb
- 16" - 5,900 lb

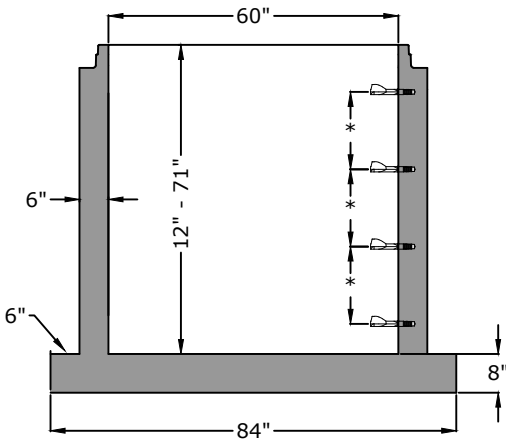
Riser



Riser Weights

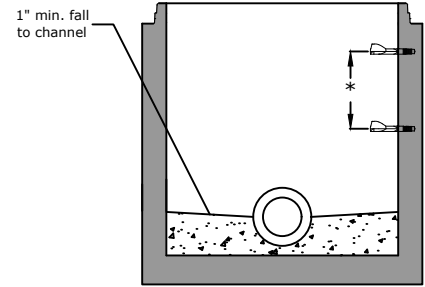
- 12" - 1,300 lb
- 16" - 1,750 lb
- 24" - 2,600 lb
- 32" - 3,450 lb
- 36" - 3,900 lb
- 48" - 5,200 lb
- 60" - 6,500 lb
- 64" - 6,900 lb

Monolithic base

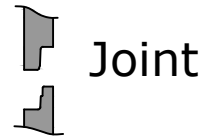


Base Weights

- 12" - 5,150 lb
- 16" - 5,600 lb
- 24" - 6,450 lb
- 32" - 7,300 lb
- 48" - 9,050 lb
- 60" - 10,350 lb
- 64" - 10,800 lb
- 71" - 11,550 lb



Manhole Base Preformed Invert Detail



Approved for Production

Project: _____

Date: _____

Quantity: _____

By: _____

Drawn by: Eric Barger

Date: 08.222024

Concrete: 5,000 psi minimum 28 day compressive strength
Reinforcing: Per ASTM C478 with design calculations performed by a Licensed P.E. Minimum 2" cover of all reinforcing steel.
Pipe Penetrations: All pipe penetrations are placed according to job requirements.
Pipe Seals: All pipe boots will meet ASTM C 923.
Sealant: Sealant used will meet ASTM C 990.
Steps: On 16" centers unless otherwise specified.
Preformed Invert: As required by plans or governing specifications.

**BARGER
PRECAST**

P.O. Box 370 - Kingston TN 37763
 Phone 888.882.5860 - BargerPrecast.com

**60" I.D. Manhole - Extended Base Slab
 ASTM C-478 Compliant**