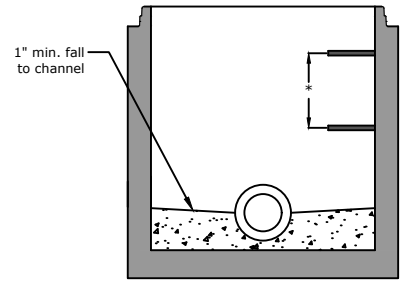


Side View

Flat Top

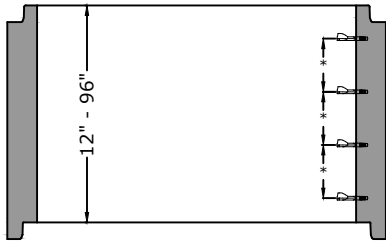


Flat Top
 8" - 7,000 lb.
 12" - 10,500 lb.
 16" - 14,000 lb.



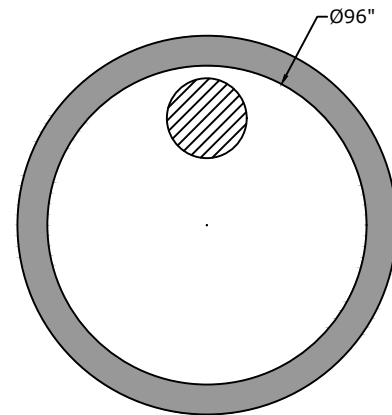
Manhole Base Preformed Invert Detail

Riser

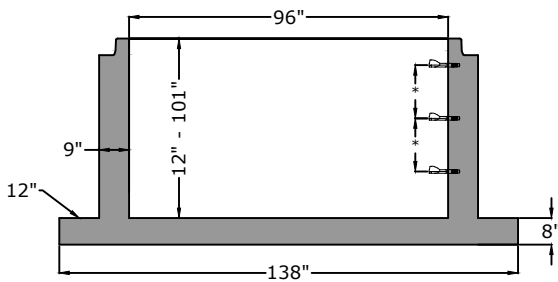


Riser Weights
 12" - 3,500 lb.
 24" - 6,100 lb.
 36" - 9,200 lb.
 48" - 12,300 lb.
 60" - 15,300 lb.
 72" - 18,500 lb.
 84" - 21,500 lb.
 96" - 24,500 lb.

Top View



Monolithic Base



Base Weights
 12" - 13,400 lb.
 24" - 16,000 lb.
 36" - 19,100 lb.
 48" - 22,200 lb.
 60" - 25,200 lb.
 72" - 28,400 lb.
 84" - 31,400 lb.
 96" - 34,400 lb.



Approved for Production

Project: _____

Date: _____

Quantity: _____

By: _____

Drawn by: Eric Barger

Date: 08.052024

BARGER
PRECAST

Concrete: 5,000 psi minimum 28 day compressive strength
Reinforcing: Per ASTM C478 with design calculations performed by a Licensed P.E. Minimum 2" cover of all reinforcing steel.

Pipe Penetrations: All pipe penetrations are placed according to job requirements.

Pipe Seals: All pipe boots will meet ASTM C 923.

Sealant: Sealant used will meet ASTM C 990.

Steps: On 16" centers unless otherwise specified.

Preformed Invert: As required by plans or governing specifications.

96" I.D. Manhole - Extended Base Slab
ASTM C-478 Compliant

P.O. Box 370 - Kingston TN 37763
 Phone 888.882.5860 - BargerPrecast.com