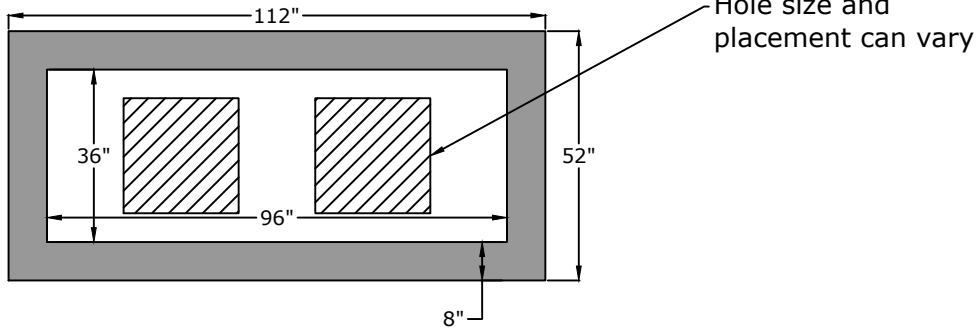


Top View



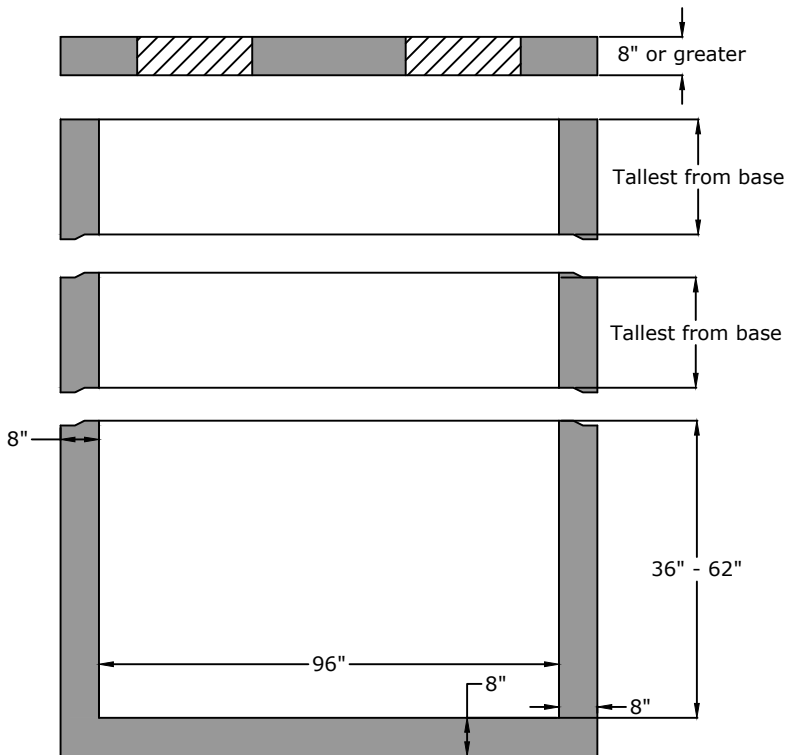
Top Lid

Height (in.)	Weight (lb.)
8"	4,000

Riser Weight

Height (in.)	Weight (lb.)
36"	7,308
40"	8,120
44"	9,000
48"	9,800
52"	10,500
56"	11,400
60"	12,200
62"	12,600

Side View



Base Weight

Height (in.)	Weight (lb.)
36"	11,308
40"	12,120
44"	13,000
48"	13,800
52"	14,500
56"	15,400
60"	16,200
62"	16,600

Approved for Production

Project: _____

Date: _____

Quantity: _____

By: _____

Drawn by: Eric Barger Date: 8.092024

Specifications

Concrete: 5,000 psi minimum strength (28 day)
 Reinforcement: ASTM C 913 Latest Edition
 TDOT Reference: D-CB-14S

BARGER
PRECAST

P.O. Box 370 - Kingston TN 37763
 Phone 888.882.5860 - BargerPrecast.com

**36" x 96" Catch Basin With 8" Walls
 (Adjustable Height)**