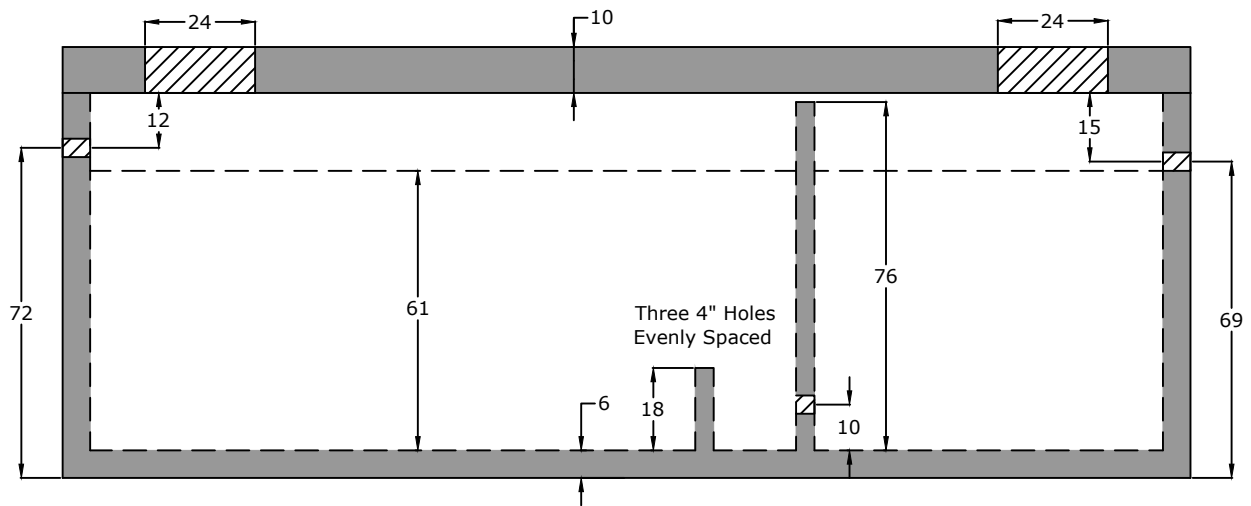


Top View

Notes:

ASTM C 1613 Compliant
 HS20 Traffic Rated
 4" Inlet/Outlet (Standard)
 Three 4" Holes in Baffle Wall
 2/3 - 1/3 Compartment Capacity



Side View

Specifications

Concrete: 5,000 psi minimum strength (28 day)
Reinforcing: Primary reinforcement will be rebar.
Risers: Grade rings and manhole frames and covers sold separately.
Sealant: Sealant used in the seam of the tank will meet or exceed ASTM C990.
Pipe Penetrations: Inlet and outlets are fitted with seals that meet or exceed all ASTM C923 specifications.
Partition Wall: The partition wall, if present, is poured monolithically.
Drawing: All measurements are accurate within ± 1 inch.

Tank Warranty: See Terms and Conditions.

Centroid(s): Lid (123, 47), Base (125, 47)

BARGER
PRECAST

Weights

Top - 19,030 lb
 Bottom - 40,313 lb

Anti-Float Protection

29" of water

Installation: The tank hole is not to be more than 18 in. longer and wider than the tank. There shall be a minimum of 6" of 3/4" stone bedding. This tank is designed for HS20 traffic loads and with a backfill cover between 2' - 6'. Water table assumed at top of tank.

5,000 Gallon HS20 Grit Tank
Hamilton County WWTa - Hamilton County, TN

P.O. Box 370 - Kingston TN 37763
 Phone 888.882.5860 - BargerPrecast.com

Date: 2.272017

Drawn By: Eric Barger

Updated: 8.202024