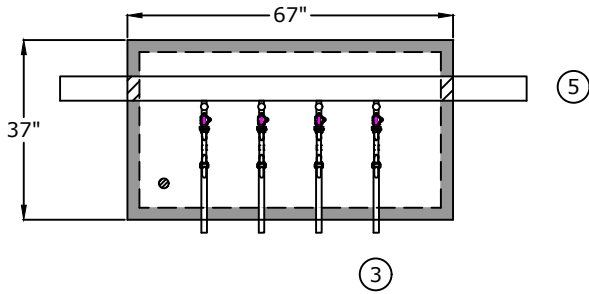
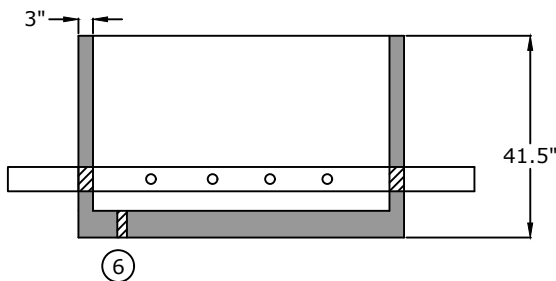


## Top View

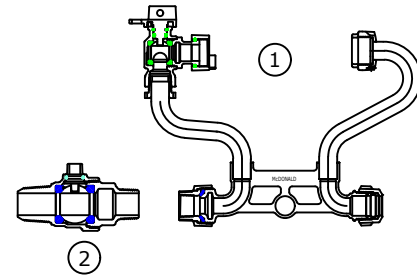


1. Meter Yoke  
Ford VBHH727W8133NL
2. Corporation Stop  
Ford FOM34FB1600NL
3. 24" brass nipple
4. 30" x 60" opening single leaf aluminum door, pedestrian rated (300 lb/ft<sup>2</sup>)
4. 4" Class 53 D.I.P.
5. 2" drain hole

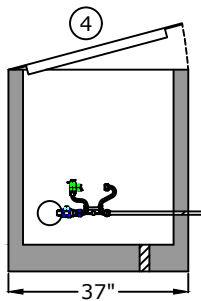
## Side View



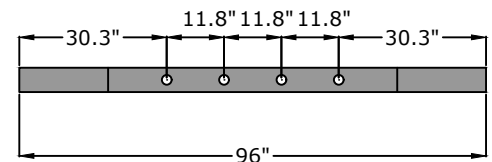
## Component Detail



## End View



## Pipe detail for taps



## Approved for Production

Project: \_\_\_\_\_

Date: \_\_\_\_\_

Quantity: \_\_\_\_\_

By: \_\_\_\_\_

# BARGER

## PRECAST

### Specifications

**Concrete:** 5,000 psi minimum strength (28 day)

**Pipe Penetrations:** All pipe penetrations are placed according to job requirements.

**Pipe Stands:** N/A

**Sealant:** N/A

**Steps:** N/A

## 4 Gang Meter Vault - 41.5" Tall Columbia Power & Water Systems

C.R. Barger & Sons, Inc.  
P.O. Box 370 - Kingston TN 37763  
Phone 888.882.5860 - BargerAndSons.com

Date: 5.122022

Drawn By: Samantha Lowe

Updated: 5.120222