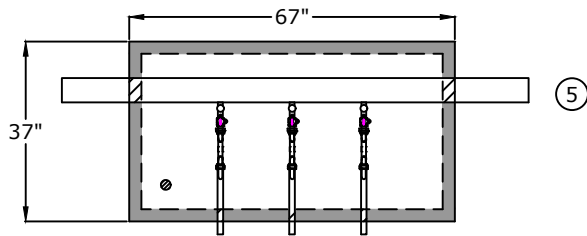
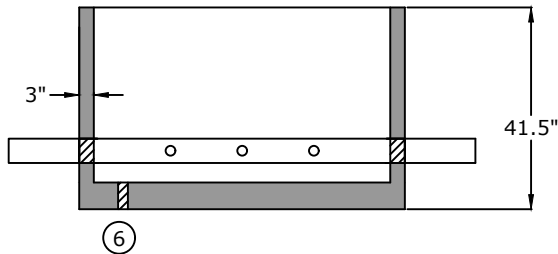


## Top View

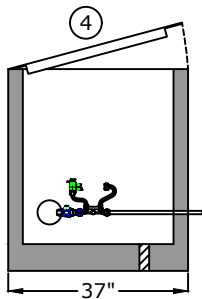


1. Meter Yoke  
A.Y. McDonald 21-207WXQQ 33  
Ford VB72-7W-44-33-Q
2. Corporation Stop  
A.Y. McDonald 4704BQ 3/4  
Ford FB11003Q
3. Type K Copper
4. 30" x 60" opening single leaf  
aluminum door, pedestrian rated (300  
lb/ft<sup>2</sup>)
5. 4" Class 52 D.I.P.
6. 2" drain hole

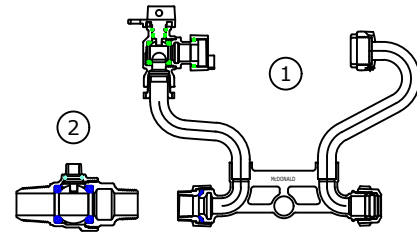
## Side View



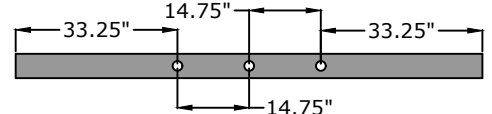
## End View



## Component Detail



## Pipe detail for taps



## Approved for Production

Project: \_\_\_\_\_

Date: \_\_\_\_\_

Quantity: \_\_\_\_\_

By: \_\_\_\_\_

# BARGER PRECAST

## Specifications

**Concrete:** 5,000 psi minimum strength (28 day)

**Pipe Penetrations:** All pipe penetrations are placed according to job requirements.

**3-Gang  $\frac{3}{4}$ " Meter Vault**  
**City of Clarksville**

P.O. Box 370 - Kingston TN 37763  
Phone 888.882.5860 - BargerPrecast.com

Date: 12.202024

Drawn By: Samantha Lowe

Approx. Empty Weight: 3,100 lbs.