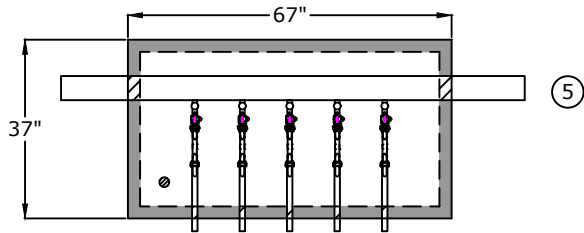


Top View



1. Meter Yoke
A.Y. McDonald 720-412
TMMD44
Full Port Ball Valve 360 Rotation
Full Port Angled Dual Check

2. Corporation Stop
A.Y. McDonald 7410BCAPF

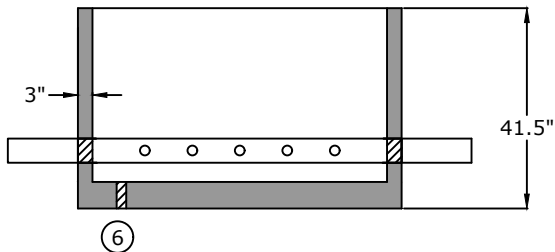
3. 1" x 12" Brass Nipple

4. 29" x 59" opening single leaf aluminum door, pedestrian rated (300 lb/ft²) S1R029059B

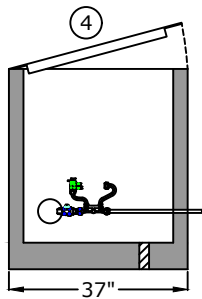
5. 4" Class 56 D.I.P.

6. 2" drain hole

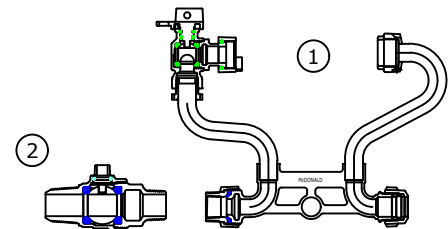
Side View



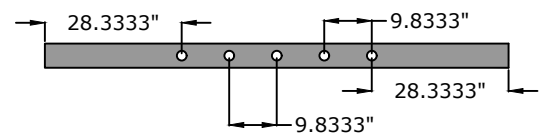
End View



Component Detail



Pipe detail for taps



Approved for Production

Project: _____

Date: _____

Quantity: _____

By: _____

BARGER PRECAST

P.O. Box 370 - Kingston TN 37763
Phone 888.882.5860 - BargerPrecast.com

Specifications

Concrete: 5,000 psi minimum strength (28 day)

Pipe Penetrations: All pipe penetrations are placed according to job requirements.

5-Gang $\frac{3}{4}$ " Meter Vault City of Clarksville

Date: 10.022024

Drawn By: Samantha Lowe

Approx. Vault Weight: 3,100 lbs.