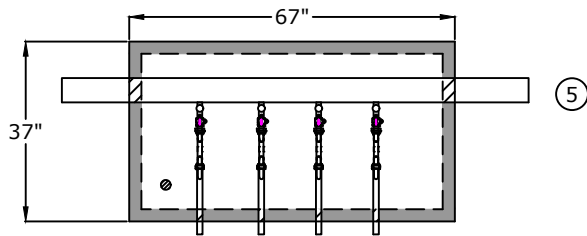
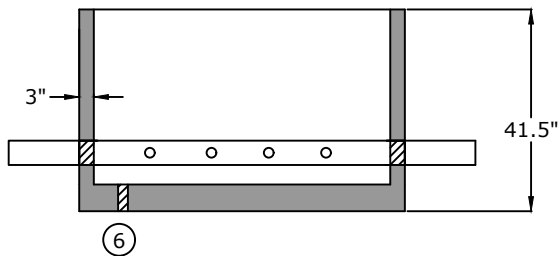


Top View

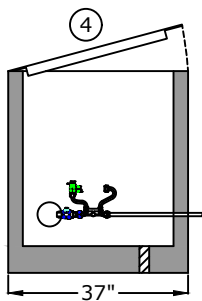


1. Meter Yoke
A.Y. McDonald 720-209 WWDD-33
Full Port Ball Valve
Full Port Ball Valve
2. Corporation Stop
A.Y. McDonald 7410BCAPF
3. $\frac{3}{4}$ " x 18" Brass Nipple
4. 29" x 59" opening single leaf aluminum door, pedestrian rated (300 lb/ft²) S1R029059B
5. 4" Class 53 D.I.P.
6. 2" drain hole

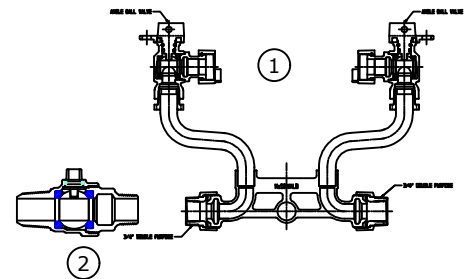
Side View



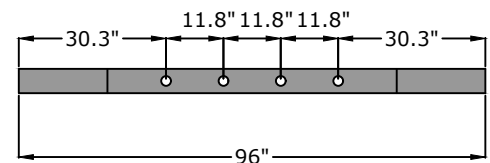
End View



Component Detail



Pipe detail for taps



Approved for Production

Project: _____

Date: _____

Quantity: _____

By: _____

BARGER PRECAST

Specifications

Concrete: 5,000 psi minimum strength (28 day)

Pipe Penetrations: All pipe penetrations are placed according to job requirements.

4-Gang $\frac{3}{4}$ " Meter Vault
City of Martin

P.O. Box 370 - Kingston TN 37763
Phone 888.882.5860 - BargerPrecast.com

Date: 10.022024

Drawn By: Samantha Lowe

Approx. Vault Weight: 3,100 lbs.