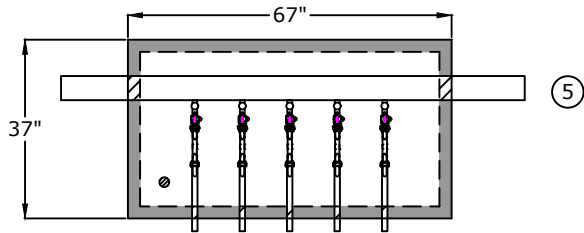
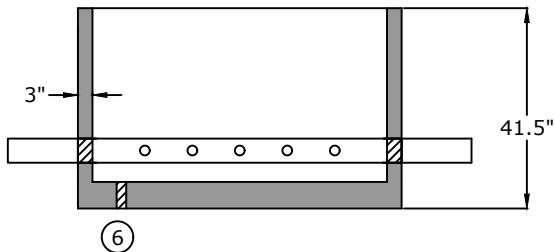


## Top View

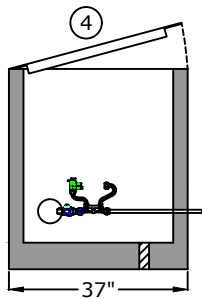


1. Meter Yoke  
A.Y. McDonald 720-209 WWDD-33  
Full Port Ball Valve  
Full Port Ball Valve
2. Corporation Stop  
A.Y. McDonald 7410BCAPF
3.  $\frac{3}{4}$ " x 18" Brass Nipple
4. 29" x 59" opening single leaf aluminum door, pedestrian rated (300 lb/ft<sup>2</sup>)  
S1R029059B
5. 4" Class 53 D.I.P.
6. 2" drain hole

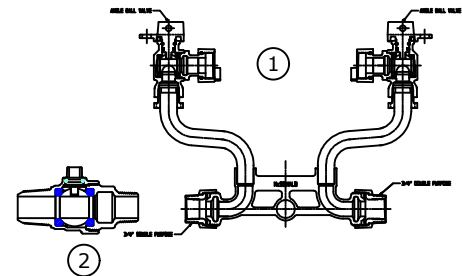
## Side View



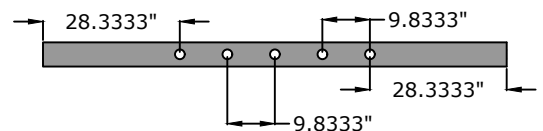
## End View



## Component Detail



## Pipe detail for taps



## Approved for Production

Project: \_\_\_\_\_

Date: \_\_\_\_\_

Quantity: \_\_\_\_\_

By: \_\_\_\_\_

# BARGER PRECAST

P.O. Box 370 - Kingston TN 37763  
Phone 888.882.5860 - BargerPrecast.com

## Specifications

**Concrete:** 5,000 psi minimum strength (28 day)

**Pipe Penetrations:** All pipe penetrations are placed according to job requirements.

## 5-Gang $\frac{3}{4}$ " Meter Vault City of Martin

Date: 10.022024

Drawn By: Samantha Lowe

Approx. Vault Weight: 3,100 lbs.