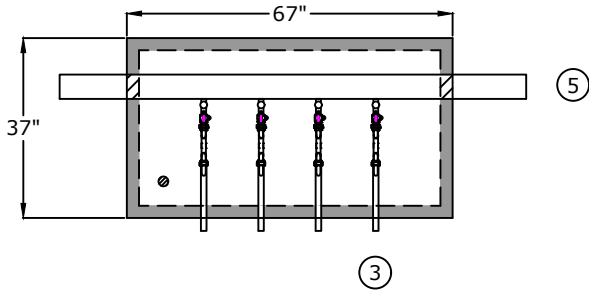
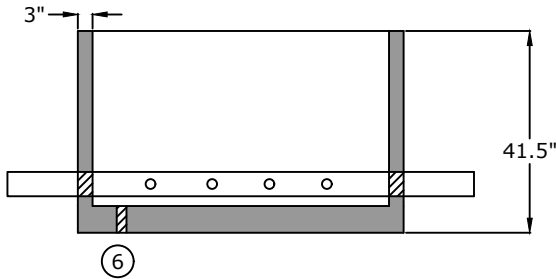


Top View

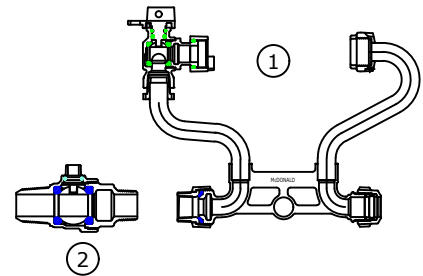


1. Meter Yoke
A.Y. McDonald 720-412
TMMD44
Full Port Ball Valve 360 Rotation
Full Port Angled Dual Check
2. Corporation Stop
A.Y. McDonald 7410BCAPF
3. 1" x 18" Brass Nipple
4. 29" x 59" opening single leaf
aluminum door, pedestrian rated (300
lb/ft²) S1R029059B
5. 4" Class 56 D.I.P.
6. 2" drain hole

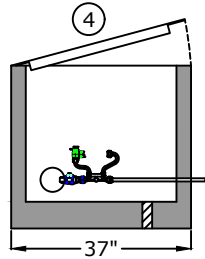
Side View



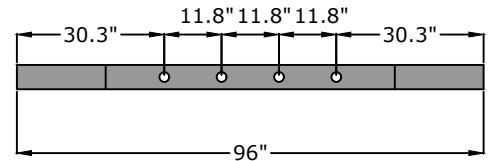
Component Detail



End View



Pipe detail for taps



Approved for Production

Project: _____ Date: _____

Quantity: _____ By: _____

BARGER PRECAST

Specifications

Concrete: 5,000 psi minimum strength (28 day)
Pipe Penetrations: All pipe penetrations are placed according to job requirements.
Pipe Stands: N/A
Sealant: N/A
Steps: N/A

4 Gang 1" Meter Vault Consolidated Utility District

C.R. Barger & Sons, Inc.
 P.O. Box 370 - Kingston TN 37763
 Phone 888.882.5860 - BargerAndSons.com

Date: 2.122025

Drawn By: Samantha Lowe

Approx. Empty Weight: 3,100 lbs.