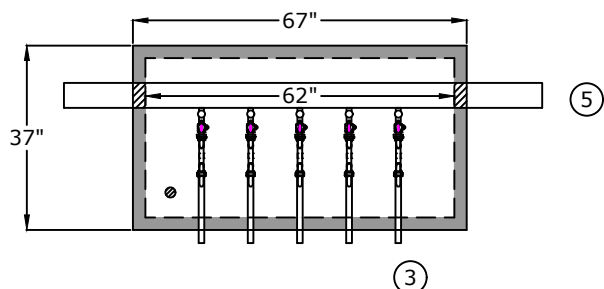
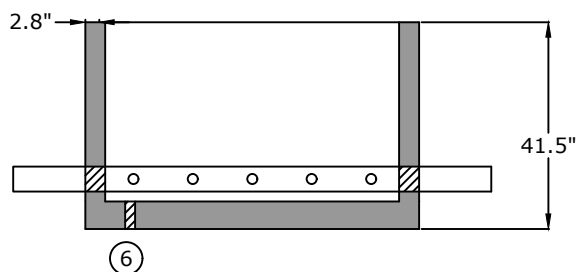


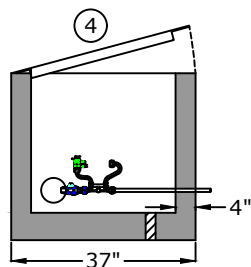
Top View



Side View

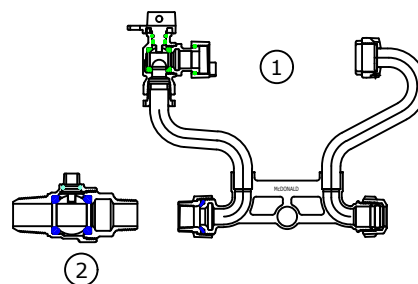


End View

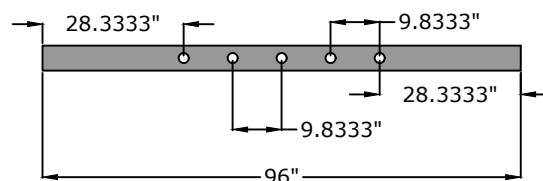


1. Meter Yoke
A.Y. McDonald 720-412 JMMD 44
Full Port Ball Valve 360 Rotation
Full Port Angled Dual Check
AYM $\frac{5}{8}$ " x 1" 710J14KIT
2. Corporation Stop
A.Y. McDonald 7410BCAPF
3. 1" x 18" Brass Nipple
4. 29" x 59" opening single leaf
aluminum door, pedestrian rated (300
lb/ft²) S1R029059CD
5. 4" Class 56 D.I.P.
6. 2" drain hole

Component Detail



Pipe detail for taps



Approved for Production

Project: _____

Date: _____

Quantity: _____

By: _____

Drawn by: Samantha Lowe

Date: 10.172024

Concrete: 5,000 psi minimum strength (28 day)
Reinforcing: Primary reinforcement will be rebar (Grade 60) rebar.
Pipe Penetrations: All pipe penetrations are placed according to job requirements.
Sealant: Sealant used will meet or exceed ASTM C990.
Steps: If required, will be aligned under the hatch unless specified.
General: Meter vaults are not water tight structures unless specified by Barger Precast.
Tank Warranty: See Terms and Conditions.

BARGER PRECAST

P.O. Box 370 - Kingston TN 37763
 Phone 888.882.5860 - BargerPrecast.com

5 Gang 1" Meter Vault MWSD