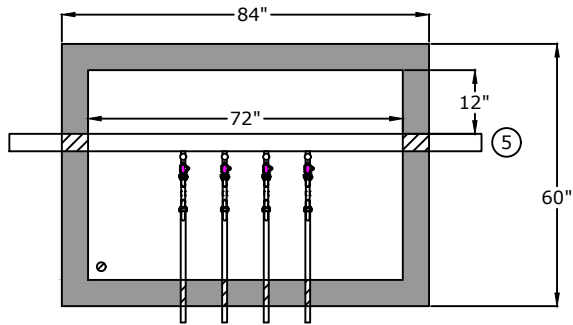
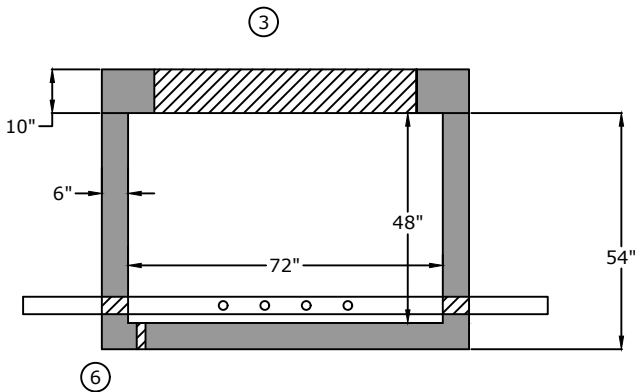


## Top View

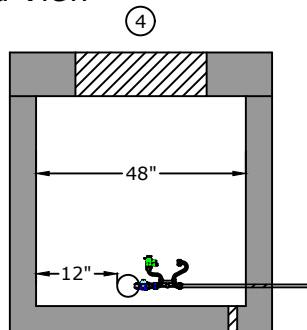


1. Meter Yoke  
A.Y. McDonald 720-412-JMMD 44  
Full port ball valve  
Full port angled dual check  
AYM  $\frac{5}{8}$ " x 1" 710J14KIT
2. Corporation Stop  
A.Y. McDonald 7410BCAPF
3. 1" Brass nipple
4. 30" x 60" opening traffic rated aluminum hatch H1W6030
5. 4" Class 56 D.I.P.
6. 2" drain hole

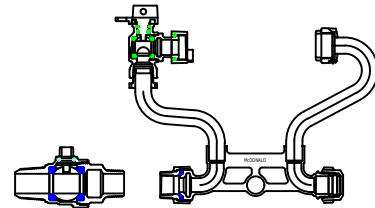
## Side View



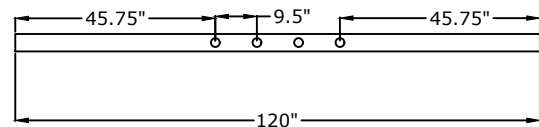
## End View



## Component Detail



## Pipe detail for taps



## Approved for Production

Project: \_\_\_\_\_

Date: \_\_\_\_\_

Quantity: \_\_\_\_\_

By: \_\_\_\_\_

Drawn by: Samantha Lowe

Date: 10.17.2024

# BARGER PRECAST

P.O. Box 370 - Kingston TN 37763  
Phone 888.882.5860 - BargerPrecast.com

**Concrete:** 5,000 psi minimum strength (28 day)  
**Reinforcing:** Primary reinforcement will be rebar (Grade 60) rebar.  
**Pipe Penetrations:** All pipe penetrations are placed according to job requirements.  
**Sealant:** Sealant used will meet or exceed ASTM C990.  
**Steps:** If required, will be aligned under the hatch unless specified.  
**General:** Meter vaults are not water tight structures unless specified by Barger Precast.  
**Tank Warranty:** See Terms and Conditions.

**6' x 4' x 4' - HS20 4 Gang 1" Meter Vault  
MWSD**