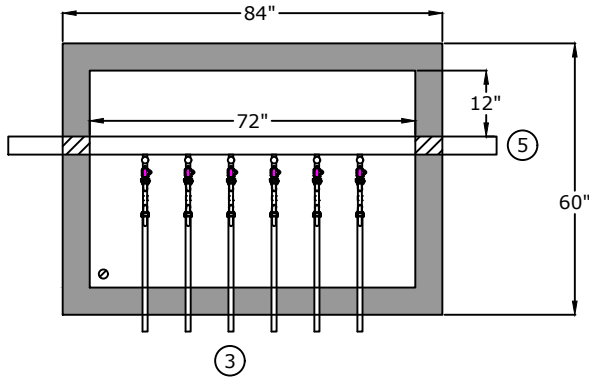
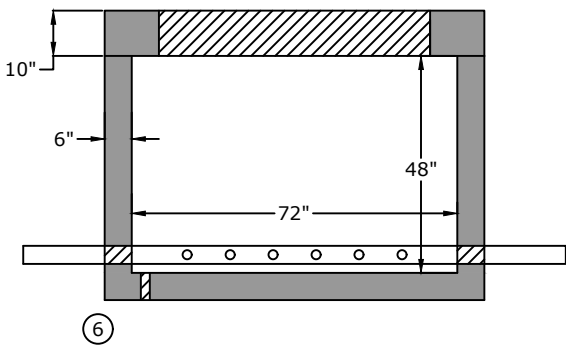


Top View

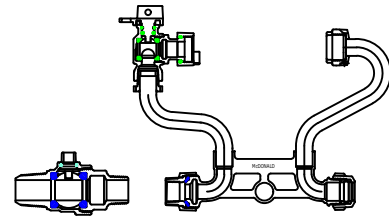


1. Meter Yoke
A.Y. McDonald 720-412-JMMD 44
Full port ball valve
Full port angled dual check
AYM $\frac{5}{8}$ " x 1" 710J14KIT
2. Corporation Stop
A.Y. McDonald 7410BCAPF
3. 1" Brass nipple
4. 30" x 60" opening traffic rated aluminum hatch H1W6030
5. 4" Class 56 D.I.P.
6. 2" drain hole

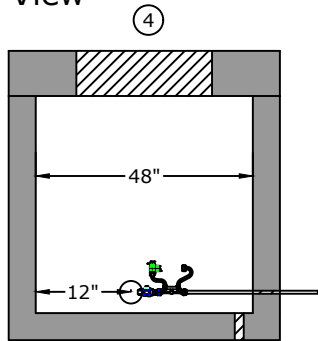
Side View



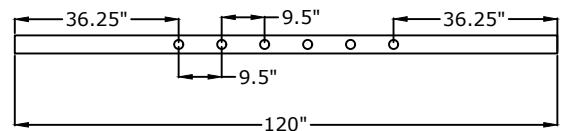
Component Detail



End View



Pipe detail for taps



Approved for Production

Project: _____

Date: _____

Quantity: _____

By: _____

Drawn by: Samantha Lowe

Date: 10.172024

Concrete: 5,000 psi minimum strength (28 day)
Reinforcing: Primary reinforcement will be rebar (Grade 60) rebar.
Pipe Penetrations: All pipe penetrations are placed according to job requirements.
Sealant: Sealant used will meet or exceed ASTM C990.
Steps: If required, will be aligned under the hatch unless specified.
General: Meter vaults are not water tight structures unless specified by Barger Precast.

Tank Warranty: See Terms and Conditions.

**BARGER
PRECAST**

P.O. Box 370 - Kingston TN 37763
 Phone 888.882.5860 - BargerPrecast.com

**6' x 4' x 4' - HS20 6 Gang 1" Meter Vault
MWSD**