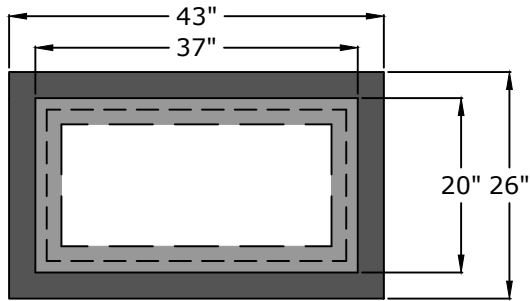


Top View

Weights

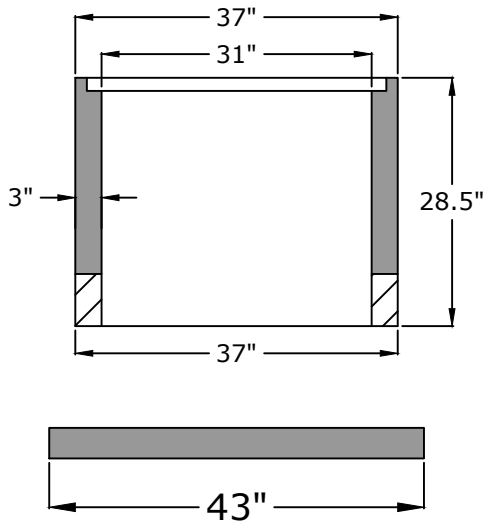
Vault - 748 lb

Bottom Slab - 383 lb

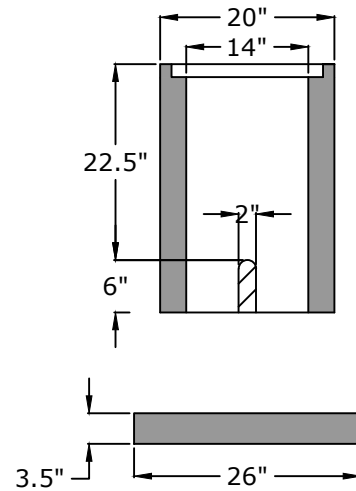


Side View

JBS 8121 Frame and Cover



End View



Approved for Production

Project: _____

Date: _____

Quantity: _____

By: _____

Drawn by: Samantha Lowe

Date: 10.17.2024

BARGER PRECAST

P.O. Box 370 - Kingston TN 37763
Phone 888.882.5860 - BargerPrecast.com

Concrete: 5,000 psi minimum strength (28 day)

Reinforcing: Primary reinforcement will be rebar (Grade 60) rebar.

Pipe Penetrations: All pipe penetrations are placed according to job requirements.

Sealant: Sealant used will meet or exceed ASTM C990.

Steps: If required, will be aligned under the hatch unless specified.

General: Meter vaults are not water tight structures unless specified by Barger Precast.

Tank Warranty: See Terms and Conditions.

**1" Nashville Meter Vault
Nashville Metro Water Services Detail**