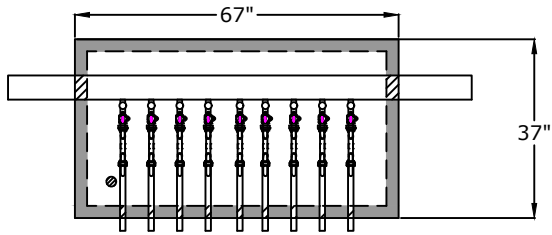
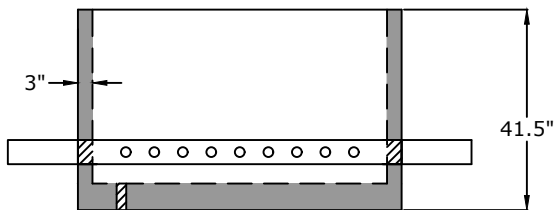


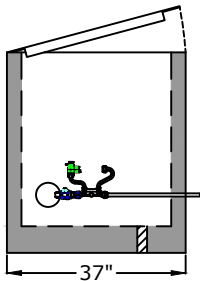
Top View



Side View

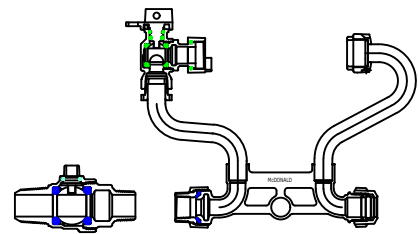


End View

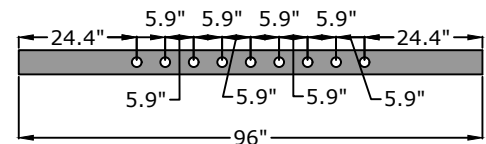


1. 4" Class 52/53 D.I.P
2. Corportatoin Stop
Ford $\frac{3}{4}$ " FB1600-3-NL
Mueller $\frac{3}{4}$ " B20045N
3. Meter Couplings
Ford C38-23-2-25-NL
Mueller H1089026 215N
4. Resetters
Ford VBHH42-7W-B1-NL
Mueller 234B24118R2-03N
5. $\frac{3}{4}$ " X 1" Female Adapter
Ford $\frac{3}{4}$ " X 1" C14-34-Q-NL FIPXQJC
Mueller $\frac{3}{4}$ " X 1" H-15451N FIX110C
6. (9) 1" X 24" Pieces of PEX with
1.25" Plastic protective sleeve
7. (9) Plastic Inserts
A.Y McDonald 1" 6131T
8. 30" X 60" Opening Single Leaf
Aluminum Door, Pedestrian Rated (300
lb / ft²)
9. Drain Hole

Component Detail



Pipe Detail for Taps



Approved for Production

Project: _____

Date: _____

Quantity: _____

By: _____

BARGER PRECAST

Specifications

Concrete: 5,000 psi minimum strength (28 day)

Pipe Penetrations: All pipe penetrations are placed according to job requirements.

**9-Gang $\frac{3}{4}$ " X 1" Meter Vault
W.W.A.W.C**

P.O. Box 370 - Kingston TN 37763
Phone 888.882.5860 - BargerPrecast.com

Date: 10.202025

Drawn By: Samantha Mills

Approx. Empty Vault Weight: 3,100 lbs.