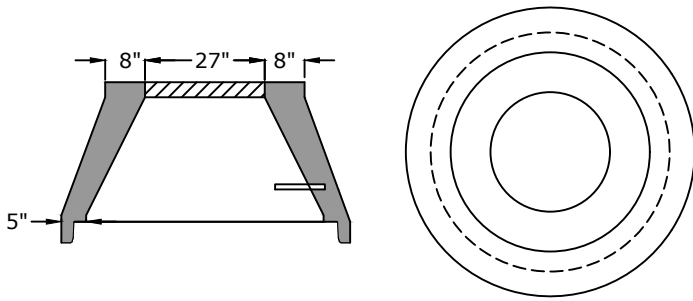
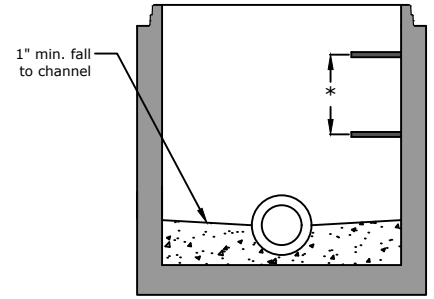


Concentric Cone

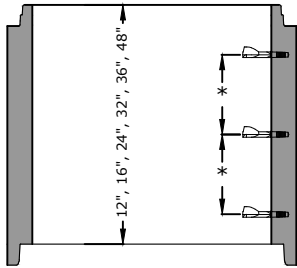


Concentric Cone  
24" - 2,750 lb.



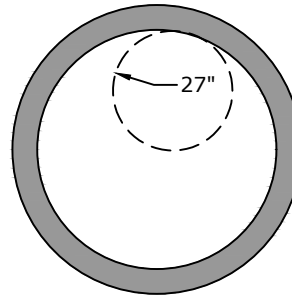
**Manhole Base Preformed Invert Detail**

Riser



Riser Weights

- 12" - 900 lb
- 16" - 1,150 lb
- 24" - 1,750 lb
- 32" - 2,300 lb
- 36" - 2,600 lb
- 48" - 3,450 lb



Flat Top

- 27" dia. standard size for sewer
- Storm opening will match casting opening



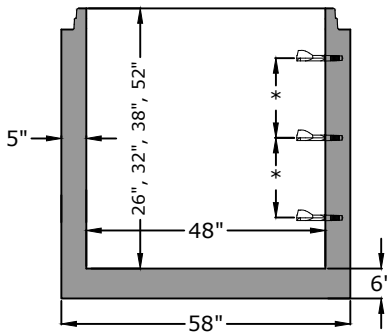
Flat Top - 27" Round Opening

- 8" Thick Slab - 1,550 lb.** Most common
- 10" Thick Slab - 1,900 lb.
- 12" Thick Slab - 2,200 lb.

Flat Top - Rectangular Openings

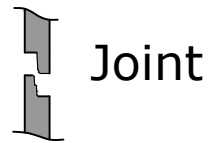
- 24" x 24"
- 28" x 28"
- 24" x 34"
- 19" x 30"

Monolithic base



Base Weights

- 24" - 3,730 lb
- 32" - 4,320 lb
- 36" - 4,600 lb
- 38" - 4,730 lb
- 48" - 5,500 lb
- 52" - 5,762 lb
- 60" - 6,350 lb
- 69" - 7,000 lb



Joint

**Approved for Production**

**Project:** \_\_\_\_\_

**Date:** \_\_\_\_\_

**Quantity:** \_\_\_\_\_

**By:** \_\_\_\_\_

**Drawn by:** Eric Barger

**Date:** 07.312024

**Concrete:** 4,500 psi minimum 28 day compressive strength  
**Reinforcing:** Per ASTM C478 with design calculations performed by a Licensed P.E. Minimum 2" cover of all reinforcing steel.  
**Pipe Penetrations:** All pipe penetrations are placed according to job requirements.  
**Pipe Seals:** All pipe boots will meet ASTM C 923.  
**Sealant:** Sealant used will meet ASTM C 990.  
**Steps:** On 16" centers unless otherwise specified.  
**Preformed Invert:** As required by plans or governing specifications.

**BARGER  
PRECAST**

P.O. Box 370 - Kingston TN 37763  
 Phone 888.882.5860 - BargerPrecast.com

**48" Ø Concentric Manhole  
 ASTM C-478 Compliant**