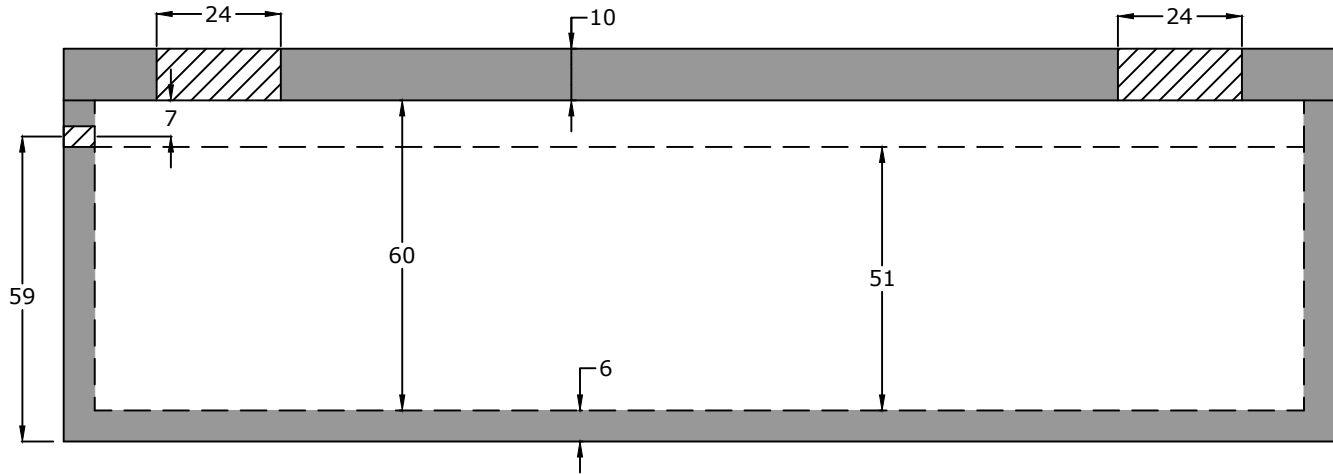


Top View

Notes:

HS20 Traffic Rated
4" Inlet (Standard)



Side View

Specifications

Concrete: 5,000 psi minimum strength (28 day)
Reinforcing: Primary reinforcement will be rebar.
Risers: Grade rings and manhole frames and covers sold separately.
Sealant: Sealant used in the seam of the tank will meet or exceed ASTM C990.
Pipe Penetrations: Inlet and outlets are fitted with seals that meet or exceed all ASTM C923 specifications.
Partition Wall: The partition wall, if present, is poured monolithically.
Drawing: All measurements are accurate within ± 1 inch.

Tank Warranty: See Terms & Conditions.

Centroid(s): Lid (121, 47), Base (121, 47)

**BARGER
PRECAST**

Weights

Top - 19,023 lb
Bottom - 31,670 lb

Anti-Float Protection

18" of water

Installation: The tank hole is not to be more than 18 in. longer and wider than the tank. There shall be a minimum of 6" of 3/4" stone bedding. This tank is designed for HS20 traffic loads and with a backfill cover between 2' - 6'. Water table assumed at top of tank.

4,000 Gallon HS20 Pump Tank

P.O. Box 370 - Kingston TN 37763
Phone 888.882.5860 - BargerPrecast.com

Date: 7.072016

Drawn By: Samantha Mills

Updated: 2.042026