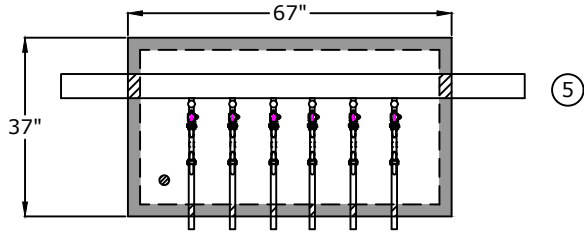
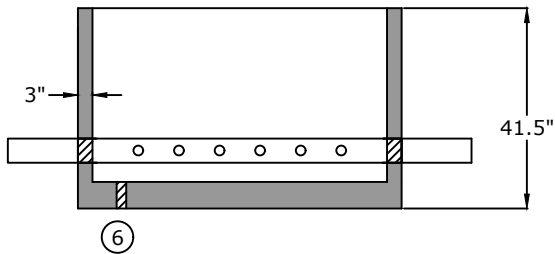


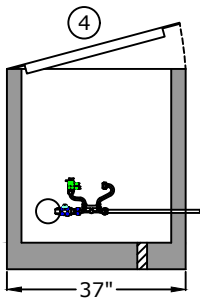
### Top View



### Side View

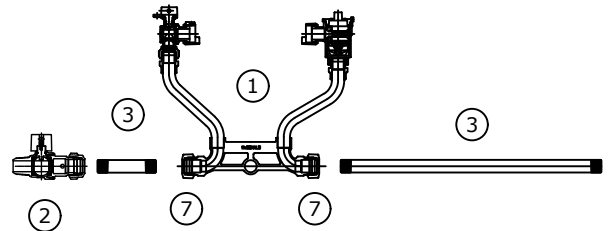


### End View

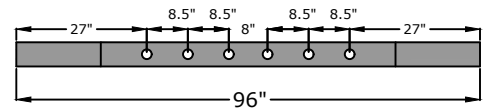


1. Meter Yoke  
1" Ford  
VBH74-10W-11-44-Q-NL DP x DP  
1" Mueller H-1404-2N 10"
2. Corporation Stop  
1" Ford F1600-4-NL CC x FIPT  
Corp Stop  
1" Mueller H-15008
3. 1" x 4" and 1" x 18" brass  
nipples poly c wrap nipple  
through wall
4. 29" x 59" opening single leaf  
aluminum door, pedestrian rated (300  
lb/ft<sup>2</sup>)
5. 4" or 6" D.I.P. Class 56 / PR 350
6. 2" drain hole
7. Multi-purpose adapter  
1" CSSUN1-44-NL FIPT  
1" Mueller H-14222

### Component Detail



### Pipe detail for taps



### Approved for Production

Project: \_\_\_\_\_

Date: \_\_\_\_\_

Quantity: \_\_\_\_\_

By: \_\_\_\_\_

# BARGER PRECAST

C.R. Barger & Sons, Inc.  
P.O. Box 370 - Kingston TN 37763  
Phone 888.882.5860 - BargerAndSons.com

### Specifications

**Concrete:** 5,000 psi minimum strength (28 day)  
**Pipe Penetrations:** All pipe penetrations are placed according to job requirements.

### 6-Gang 1" Meter Vault West Knox Utility District

Date: 4.232026

Drawn By: Eric Barger

Approx. Empty Vault Weight: 3,100 lbs.