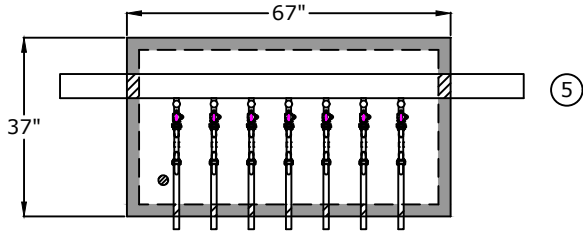
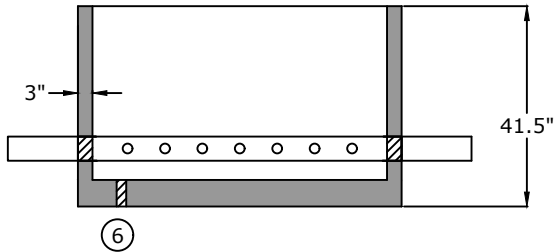


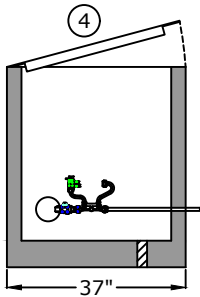
### Top View



### Side View

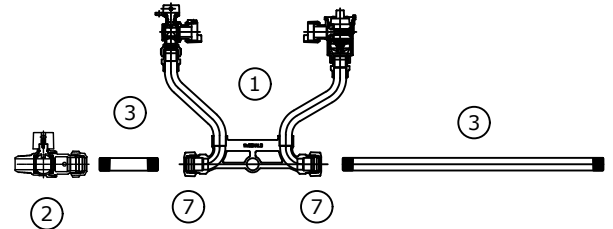


### End View

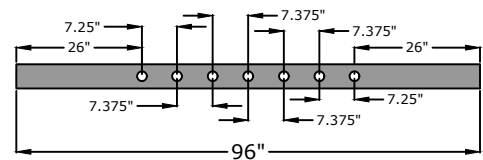


1. Meter Yoke  
 $\frac{3}{4}$ " Ford VBHH72-7W-11-33-NL  
 $\frac{3}{4}$ " Mueller 234B2404-R2-N
2. Corporation Stop  
 $\frac{3}{4}$ " Ford F1600-3-NL  
 $\frac{3}{4}$ " Mueller H-10045N
3.  $\frac{3}{4}$ " x 4" and  $\frac{3}{4}$ " x 18" brass nipples  
 poly c wrap nipple through wall
4. 29" x 59" opening single leaf aluminum door, pedestrian rated (300 lb/ft<sup>2</sup>)
5. 4" or 6" D.I.P. Class 52 / PR 350
6. 2" drain hole
7. Multi-purpose adapter  
 $\frac{3}{4}$ " Ford CSSUN1-33-NL  
 $\frac{3}{4}$ " Mueller  $\frac{5}{8}$ " x  $\frac{3}{4}$ " H-14222

### Component Detail



### Pipe detail for taps



## Approved for Production

Project: \_\_\_\_\_

Date: \_\_\_\_\_

Quantity: \_\_\_\_\_

By: \_\_\_\_\_

# BARGER PRECAST

C.R. Barger & Sons, Inc.  
 P.O. Box 370 - Kingston TN 37763  
 Phone 888.882.5860 - BargerAndSons.com

### Specifications

**Concrete:** 5,000 psi minimum strength (28 day)  
**Pipe Penetrations:** All pipe penetrations are placed according to job requirements.

## 7-Gang $\frac{3}{4}$ " Meter Vault West Knox Utility District

Date: 5.272022

Drawn By: Eric Barger

Approx. Empty Vault Weight: 3,100 lbs.